



New NDIS rule 5

Variations and Reassessment





Australian Government
Department of Social Services

The Australian Government
Department of Social Services wrote
this.

We say **DSS** for short.

When you see the word **we** it means
the DSS.



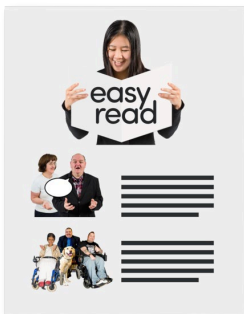
We wrote this in an easy to read way.
We use pictures to explain some ideas.

Bold

Not bold

We have some words in **bold**.
This means the letters are thicker and
darker.

These are important words.



This is an Easy Read summary of a
bigger document.

This means it has the most important
ideas.



You can ask for help to read this document.

You can ask

- A friend
- Family members
- A support person.



We recognise Aboriginal and Torres Strait Islander peoples as the **Traditional Owners** of the land we live on.



They were the **first peoples** to live on and use the

- Land
- Waters.

Contents

Who can change an NDIS plan	5
What do the new rules do	6
Variations for emergency	8
Variations to add more money	10
Variations to change the date to make a new plan	12
Reassessments	13
Contact us	15

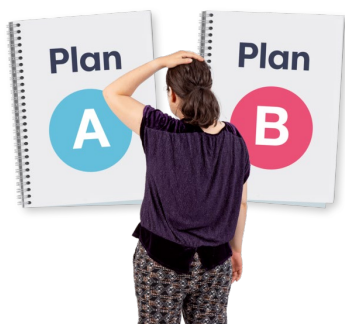
Who can change an NDIS plan



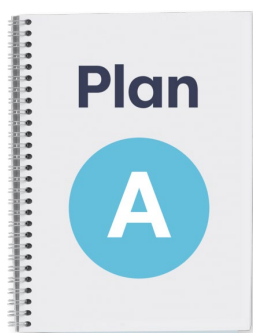
The **National Disability Insurance Agency** is the people who look after the NDIS.

We call them the NDIA.

The NDIA can change an NDIS plan in two ways



- Add things to the NDIS plan
- Make a new NDIS plan.



When the NDIA adds things to an NDIS plan, we call it a **plan variation**.

Like adding more money or supports to the NDIS plan.



When the NDIA makes a new NDIS plan, we call it a **plan reassessment**.

What do the new rules do



The new rules tell the NDIA what they need to think about when they do

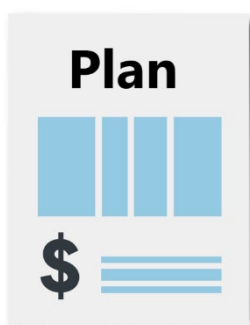
- A plan variation
- A plan reassessment.



The new rules talk about 3 types of variations

- For an emergency

Like if you cannot live at home for a time.



- To add more money to an NDIS plan



- To change the date to make a new NDIS plan.

Variations for an emergency

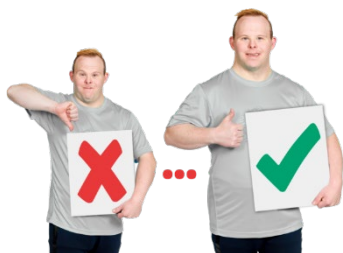


The NDIA can only make a variation for some emergencies.



They can make a variation when you have had big change in

- What you can do
- Who can help you
- Where you live



They can make a variation if the big change means you need extra supports.



They can make it if the extra support is for

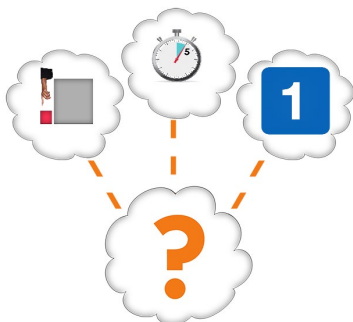
- A short time
- 1 time only.

The NDIA can only make this variation if



- You need the extra support urgently
- The NDIS is the best way to get the support.

Variations to add more money



The NDIA can only add extra money or supports to an NDIS plan if they are for

- A short time.
- 1 time only.



The support must

- Be different from the supports you have already.
- Do a different job than the supports you have already.

The support must do 1 of these things



- Replace or fix **assistive technology** already in your NDIS plan.

Assistive technology is equipment you need because of your disability.



Assistive technology can help you do things more safely or easily.

Like a wheelchair.

- Give you urgent help to keep your job.



Like money for a taxi because you **cannot** catch the bus for a time.

Give you **urgent** help to

- get more skills
- Help with you need with a life change.

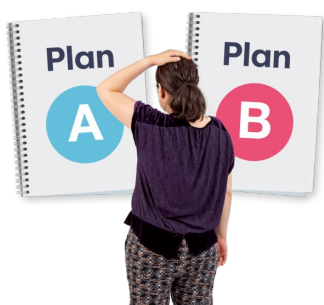


Like support to move out of home.

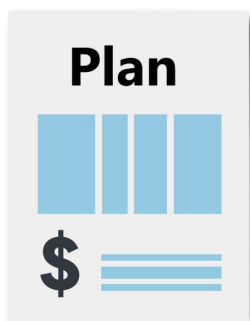


The new rules also tell the NDIA what to do if the variation is about

- Changes to your house.
- Changes to your car.
- Assistive technology.



Sometimes things about a support change after the NDIA makes an NDIS plan.



The NDIA can make a variation if

- The support costs more than expected in your NDIS plan.
- You **cannot** get the support the way you expected in your NDIS plan.
- You need extra information or services to get the support.



Like you might need a doctor to write a report to get the support.

Variations to change the date to make a new plan



The new rule says the NDIA can change the date they need to do a plan reassessment.

An NDIS plan cannot go longer than 5 years.

Reassessments



The NDIA might decide to do a plan reassessment.

You can ask for one too.



The NDIA must think about some things when deciding to do a plan reassessment.

They must think about if your support needs have changed.



They must think about if the change is about

- What you can do.
- Who can help you.
- Where you live.
- Other big life changes.





The NDIA must also think about anything else.

Like

- You think is important
- The NDIA thinks is important.
- If a participant has been paid **compensation**, and this has changed.

Compensation is where someone is paid money following an accident or injury.

- When the NDIA would need to do another reassessment of your plan

Contact us

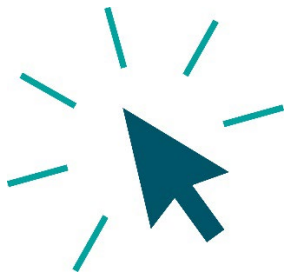


You can contact us if you **need more information.**



You can send us an email.

NDISConsultations@dss.gov.au



You can look at our website.

www.dss.gov.au/national-disability-insurance-scheme-review-and-reforms/changes-ndis-act



easyread.tech created these original illustrations. Please do not use these illustrations without permission. Visit easyread.tech for more information.